

# ProTek Systems, Inc.

PROTEK SYSTEMS, INC.  
 1250 WALLACE DR UNIT B  
 DELRAY BEACH, FL 33444  
 TELEPHONE: 800-598-2153  
 FAX: 561-395-4771  
 SALES@PROTEKMAIL.COM

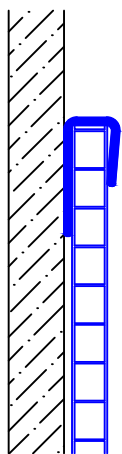
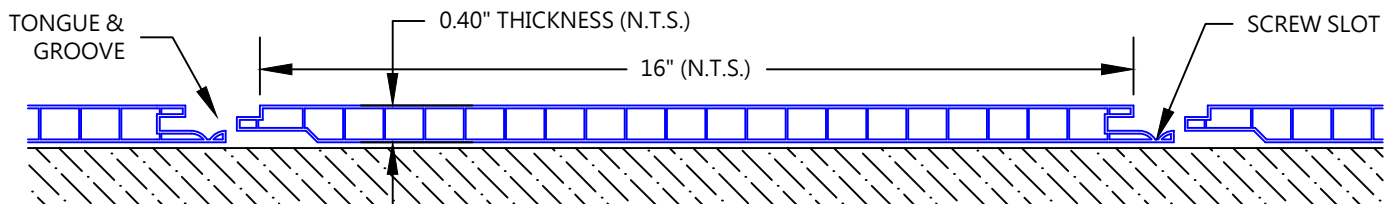
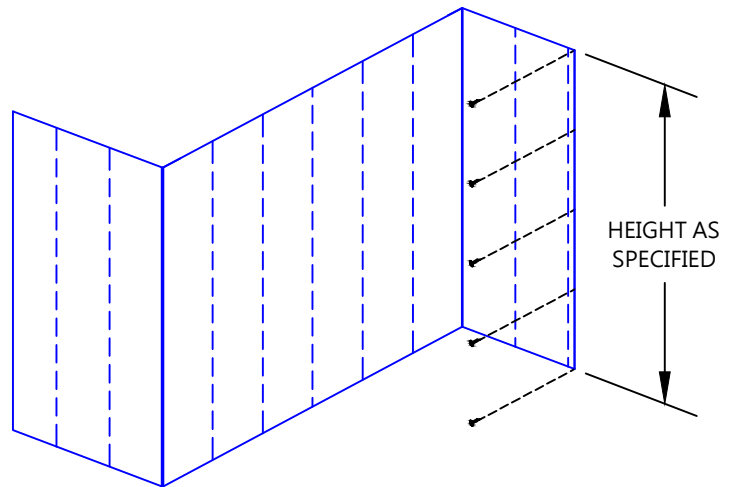
## WCUL-400 INTERLOCKING WALL PANEL SYSTEM

### FEATURES:

- CORRUGATED PLASTIC CORE
- SEAMLESS CONNECTION WITH INTERLOCKING EDGES
- 100% MOISTURE RESISTANCE
- HIGH GLOSS, UV COATED SURFACE
- 0.40" THICKNESS AVAILABLE IN 16" OR 24" PANELS
- AVAILABLE LENGTHS:
  - 8FT
  - 10FT
  - 12FT
  - 16FT
  - 20FT

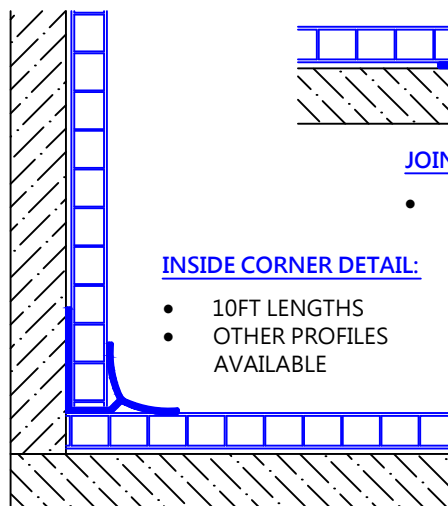
### MOUNTING OPTIONS:

- RECOMMENDED SCREW SIZE IS 1 1/4" #6 PHILLIPS BUGLE HEAD SCREW
- MAXIMUM SPACING 24" O.C. WITH BACKING
- SILICONE SEALANT AT ALL SEAMS



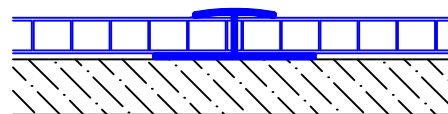
### TOP/EDGE CAP DETAIL:

- 10FT LENGTHS



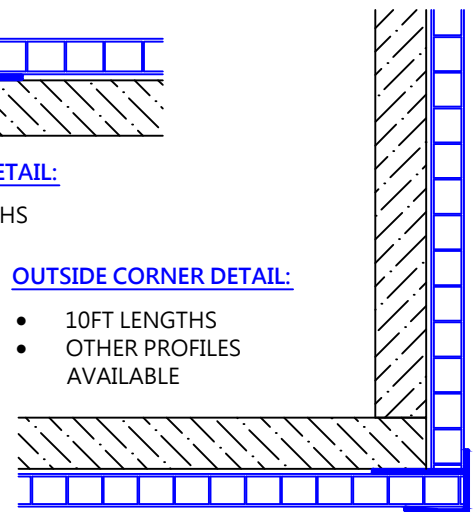
### INSIDE CORNER DETAIL:

- 10FT LENGTHS
- OTHER PROFILES AVAILABLE



### JOINT COVER DETAIL:

- 10FT LENGTHS



### OUTSIDE CORNER DETAIL:

- 10FT LENGTHS
- OTHER PROFILES AVAILABLE

CUSTOMER:	PROJECT:	<b>WCUL-400</b>
ARCHITECT:	SALES REP:	